



KCM-MD Short Plate $\frac{3}{8}'' + \frac{1}{2}'' + \frac{5}{8}''$

222258-01.2025

45 KWIK CAST
KCM-MD S $\frac{3}{8}'' + \frac{1}{2}'' + \frac{5}{8}''$
RED-BLK
#2221702



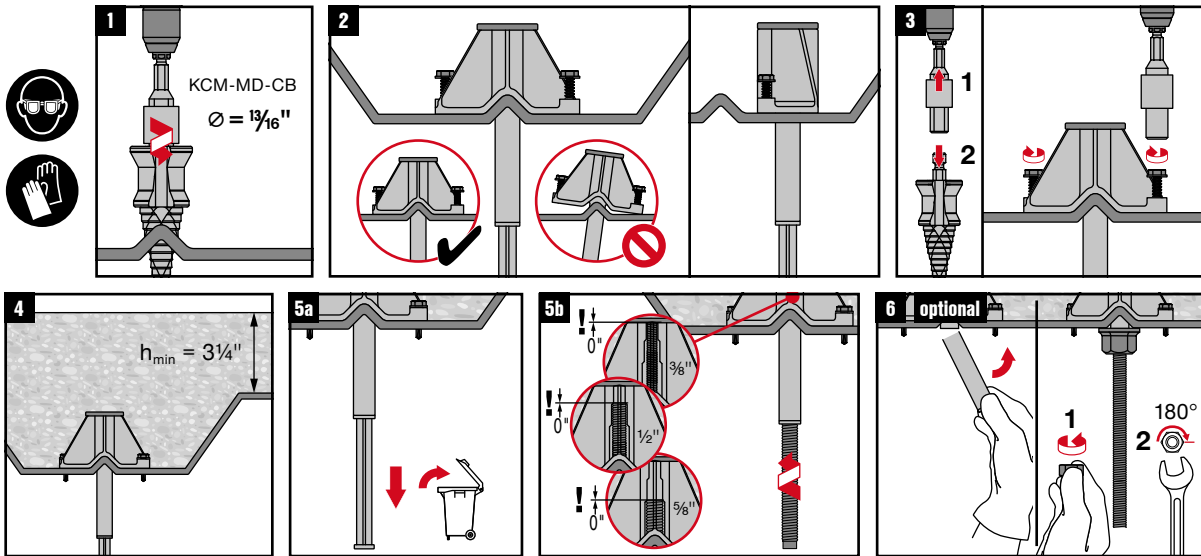
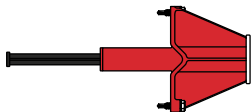
Info | Shop



qr.hilti.com/2221702

Batch Tracking
Information

Made in Taiwan
Hilti = trademark of Hilti Corp., Schaun, LI



UL maximum pipe size allowed for $\frac{3}{8}$ -inch rod is 8 NPS in the lower flute.