



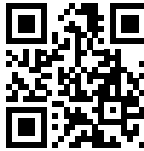
KCM-MD Short Plate $\frac{1}{4}'' + \frac{3}{8}'' + \frac{1}{2}''$

2371061-01.2025

75 KWIK CAST
KCM-MD S $\frac{1}{4}'' + \frac{3}{8}'' + \frac{1}{2}''$
BLK-BLU
#2363081



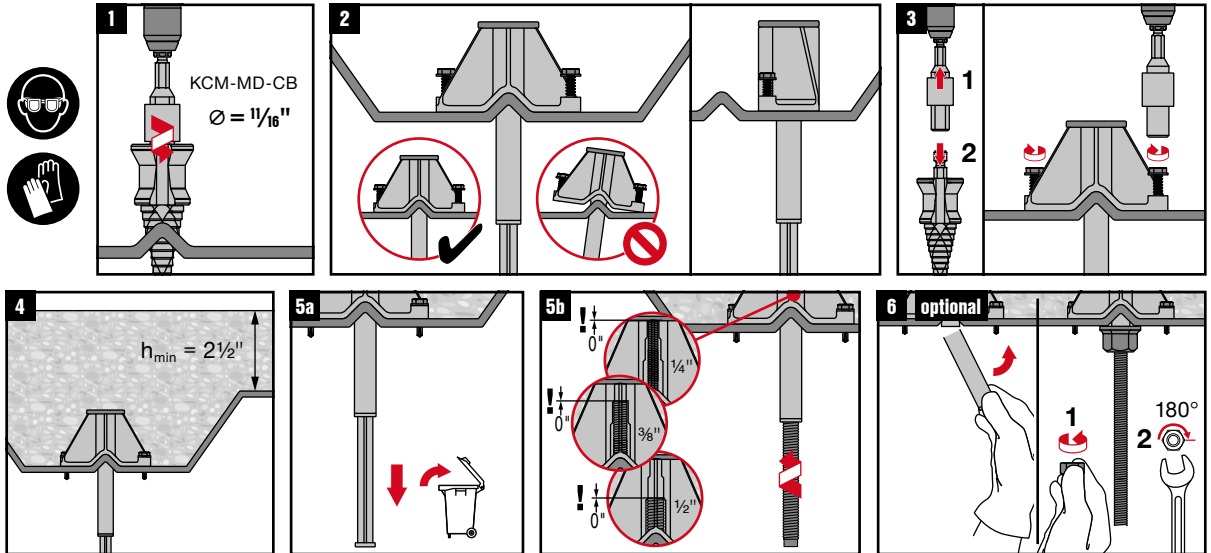
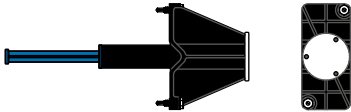
Info | Shop



Batch Tracking
Information



Made in Taiwan
Hilti = trademark of Hilti Corp., Schaun, LI



UL/FM Listing does not cover the $\frac{1}{4}$ -inch rod size

* Turn threaded rod until bottomed out to ensure full thread engagement